

# THE Companion

Issue  
48

## Honoring our 8,000th Team

PAGE 4

Stronger Together

PAGE 6

Beyond Gratitude –  
A Special Gift

PAGE 9

Canine  
Companions®

Winter 2024





# THE SPIRIT OF GRATITUDE

As year-end draws closer, we are deeply moved by the incredible support from our Canine Companions community, whose impact throughout 2024 has been remarkable. It's with sincere gratitude that we recognize the spirit of giving from each and every one of you – donors, clients, volunteers, partners and staff.

This summer marked a major milestone for our organization and the service dog industry – the placement of the 8,000th service dog team trained by Canine Companions. As the creator of the modern-day service dog, our 8,000th placement was made with the same goal as our first – to enhance independence and empower a person with a disability to live with greater confidence. Because of your support, you've helped us change thousands of lives.

September marked our third National Service Dog

Month, honoring the PROS – canines making a difference for people with disabilities nationwide. Our community made this year's celebration the most successful yet, raising awareness through events, educating others and receiving a record number of proclamations, all introducing new people to our mission and advocating more successfully than ever. Thank you!

Now, as we head into our 50th year, our eyes are laser-focused on the future with extreme gratitude for how far we've come. We're poised to do everything we can to increase the impact of our mission and shorten our wait list in 2025. There are many exciting achievements and events to look forward to in the upcoming year, but our mission – and the support of our community that makes it possible – is paramount. We're so grateful for your generosity of time, spirit and dedication.

Kind regards,

Paige Mazzoni  
Chief Executive Officer

Bill White  
Board Chair



# CANINE COMPANIONS HITS THE SILVER SCREEN

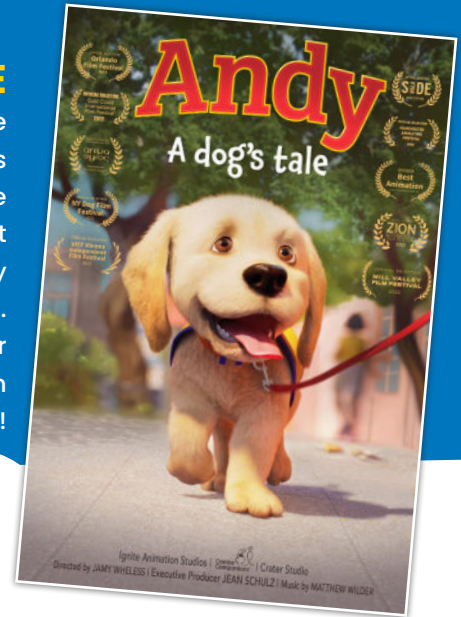


## INSIDE THE MIND OF A DOG

There's quite a buzz around Netflix's recent documentary, "Inside the Mind of a Dog," and with good reason! Canine Companions and our research partners are in the spotlight in this Top 10-rated feature exploring canine cognition. The documentary follows three Canine Companions dogs in training as they work towards becoming life-changing service dogs. You can watch now, streaming on Netflix.

## ANDY: A DOG'S TALE

"Andy: a Dog's Tale" is the story of how one Canine Companions puppy overcomes obstacles to find his purpose in life as a service dog. Andy learns that life isn't always easy, yet with determination, he shows us that unlikely heroes often come from small beginnings. Watch the award-winning short film now or make it a special movie night with an Andy-themed movie kit!



## Expert Volunteerism from Afar

Where there's a will to volunteer, there's a way to find a perfect volunteer role. Just ask Colleen Pars, who has supported our mission for over 20 years, recently in a very unique way.

When Colleen and her husband, Eli, first learned about Canine Companions, they lived in Chicago, far from our training center in Ohio. They were determined to get involved however they could – first as donors and then as volunteer puppy raisers.

Last year, an exciting opportunity presented itself that didn't require proximity to a training center. Colleen leveraged her technical experience to build our new intranet system, Fetch 2.0, from scratch. The new intranet includes landing pages for each department and region.

The project was a huge undertaking, but Colleen took it in stride, truly excelling at the task at hand. Colleen brought industry best practices to our technology team and paired those practices with her in-depth knowledge of our organization.

"If you're looking to get involved and are not sure where to start, just start small," Colleen says. Colleen is one of thousands of volunteers supporting our mission from all corners of the country.

Learn how you can volunteer at [canine.org/volunteer](https://canine.org/volunteer).





In 1975, a door towards greater independence was opened for people with disabilities. With the founding of Canine Companions, the modern-day service dog model was created, training dogs to assist people with physical disabilities in everyday tasks.



Help match more “missing pieces” like Anjali and Service Dog Cabo. **DONATE NOW!**





# Honoring Our **8,000th** Team

“Being team number 8,000 for Canine Companions is a tremendous honor,” remarks Dr. Anjali Forber-Pratt.

Anjali was only four months old when she contracted transverse myelitis – an illness that left her with paralysis. She had only recently been adopted from Kolkata, India, in the months before. However, growing up with a disability didn’t hold her back – Anjali was an avid adaptive athlete and student. She even represented Team USA in wheelchair racing at multiple Paralympic Games, securing two bronze medals.

But Anjali still frequently dropped items and needed assistance with daily tasks. When she made friends with some Canine Companions service dog teams, she saw how the dogs changed their lives and could envision a more independent future with her own service dog by her side. In 2016, she graduated with her first Canine Companions service dog, Kolton.

Upon Kolton’s retirement, Anjali didn’t know that she and her next service dog, Cabo, would be the 8,000th

team placed by the organization that started it all with a simple idea – that a dog could provide life-changing independence.

Service Dog Cabo is trained to retrieve dropped items from coins to groceries, and specifically assists Anjali by bringing her wheelchair back if it rolls out of reach – something that often occurs when she’s not seated in her wheelchair.

**“Having a service dog is the missing piece of the puzzle for my accessibility needs,”** Anjali says.

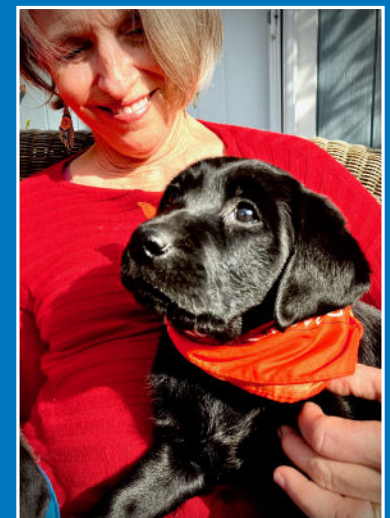
As for the next 8,000 placements, Anjali is hopeful. “The future is bright for Canine Companions to help match more service dog teams and to encourage individuals to continue to live their best lives.”

Knowing that Cabo is by Anjali’s side to empower her to live with greater independence is a testament to the strength and impact of our mission.



**“Cabo is the first puppy I’ve raised. She was fearless and loved to learn. She’d do a skill and look at me like ‘What’s next?’ I love Cabo and I know that Anjali will be the perfect partner for her.”**

– AMY SULLIVAN, VOLUNTEER PUPPY RAISER FOR THE 8,000TH SERVICE DOG PLACED



**“We welcomed Cabo into the world. We witnessed her first breath and her first steps. We are so pleased that Cabo and Anjali are the 8,000th service dog team and we wish them the best of luck in their new relationship together.”**

– ELIZABETH AND GENE WRIGHT, VOLUNTEER BREEDER CARETAKERS FOR THE 8,000TH SERVICE DOG PLACED

# STRONGER TOGETHER

Facility Dog Strong is having a powerful impact on the 700 students at Kokanee Elementary School in Woodinville, Washington – especially with those with disabilities.

Partnered with Principal Joel, Strong has become an integral part of students’ speech and occupational therapy sessions, providing motivation to students who face significant challenges. Her gentle nature and calming presence have contributed to fostering an environment where students feel confident and capable when they hadn’t aways before.

**“We have witnessed the miracle of communication through Strong,”** says Joel.

Students who have never voluntarily spoken have found their voices to speak to Strong. Those who refused to leave their homes in the morning show up at school with confidence knowing Strong will be there to greet them when they arrive. Students with high levels of anxiety receive letters from Strong, and eagerly write back.



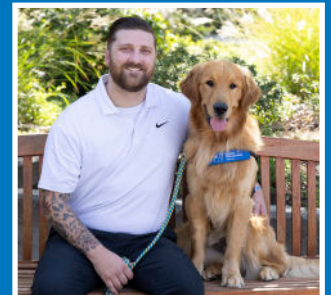
“Her impact goes beyond what words can express,” Joel says. “Strong has woven herself into the fabric of our school community, embodying our spirit and resilience.”

Strong is touching the lives of countless students, families and staff members, making Joel’s school proud to call themselves #KokaneeStrong.

# STAFF UPDATES

## ALEX SCOTT

We’re thrilled to welcome Alex Scott as our Northwest Region program director. Alex, a veteran of the United States Marine Corps, has experience with managing a large team of military working dog handlers and has more than ten years of experience and success in leading teams, mentoring trainers, canine training and overseeing operations. Please join us in welcoming Alex to the team!

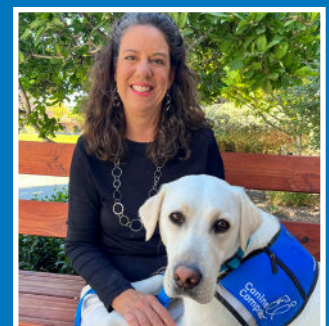


## CATHY RODGERS

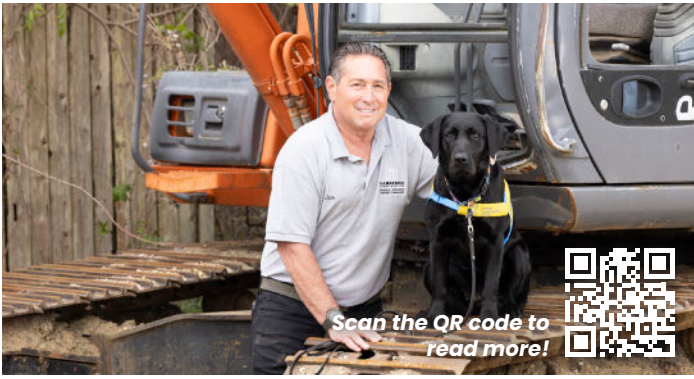
Canine Companions welcomes Cathy Rodgers back as executive director of the Southeast Region after a nine-year hiatus. With nearly 20 years in fundraising and marketing, Cathy most recently worked at Pet Alliance of Greater Orlando. She manages the Southeast Region’s budget, oversees donors and volunteers and drives growth. We’re excited to have Cathy back on board to work with the staff, volunteers and supporters in the Southeast Region.

## KATE ROSIN

We’re pleased to welcome Kate Rosin to Canine Companions as our director of planned giving. Kate has more than a decade of experience in estate and trust planning and litigation. Most recently, she worked in the area of probate and trust administration. Kate achieved her bachelor’s degree at Agnes Scott College and graduated from Stetson University College of Law. Over the past 30 years, Kate and her family have raised 15 puppies for Canine Companions.







## THE LAST PROJECT

Jim Nazarro is the second-generation owner of a commercial construction company in Bay Shore, New York. With Canine Companions rapidly outgrowing its Northeast Region Training Center, Jim learned about a major bottleneck – the need for additional dorm rooms for our clients.

“I hesitated for maybe 30 seconds,” Jim says. “I said, ‘Well, that’s easy. We’ll just build them’. This is a great thing I can do to make this dream come true and double the number of service dogs that can go to clients.”

After 42 years in business, the construction of the new wing of dorms will be Jim’s last project. He couldn’t be more pleased to end on such a high note.

“It’s a wonderful part of what I do,” Jim says. “To take a piece of dirt and create a building – it will go on for years and years. I’m committed to Canine Companions and so happy to help.”

We are so grateful for this incredible, lasting gift from Jim and his wife, Gina. Groundbreaking for the new wing of dorms at the Northeast Region Miller Family Campus is expected to begin in the spring of 2025.

## LASTING LEGACIES, LASTING MEMORIES

Moving to a new home in the 1980s led to a chance encounter with a new Canine Companions service dog team in the neighborhood, encouraging Jo Ann and her late husband John to get involved with the organization. It evolved into a lifelong commitment that has left a lasting impact.

Jo Ann and John dropped into Canine Companions’ North Central Training Center while on vacation in the mid 1980s. Upon returning to Florida, she stopped by the tiny Canine Companions training facility in Orlando. She asked how they could help – the Southeast Region needed a new campus.

Moved by the organization’s work and knowing she could pledge this significant gift over several years, Jo Ann pledged \$250,000 to help purchase land for the new center.

**“When I heard that I didn’t need to give all at once and I was still making a difference, it felt attainable,” Jo Ann remembers.**

Jo Ann’s philanthropy didn’t stop there. She supported Canine Companions by including us in her estate plans and with ongoing donations. Her cumulative gifts have reached over \$1 million, elevating her to our Hero Society.



*Former Southeast Region Executive Director Margaret Ager, current Board President Bill White, former board member Erin (Buckley) Ross and Jo Ann at the opening of the Southeast Training Center.*

**“Canine Companions acknowledges and celebrates cumulative giving. That recognition means the world to me as a donor.”**

Jo Ann feels her biggest reward comes from changing lives through our mission; both through her financial support and through the 15 puppies she’s raised since John passed away in 1991.

“Every puppy raiser, every graduate, inspires me to give. I’m so thankful to have the opportunity to make a difference in somebody’s life.”

**You can include Canine Companions in your legacy at [canine.org/plannedgiving](https://canine.org/plannedgiving).**



## Going Far With a Dash of Independence

A special service dog is having a profound impact on the life of 9-year-old Cohen, far beyond his family's expectations. Cohen, who lives with spina bifida and uses a wheelchair, had a hard time with motivation and independence. Now, with a "dash" of help from his expertly-trained best friend, Cohen is embarking on a transformative journey towards greater independence.

Malorie, Cohen's mother, says that Service Dog Dash has given her son a sense of purpose and responsibility in addition to increasing his independence and self-reliance. Through Dash's trained tasks, like retrieving items and interactive games including hide-and-seek, a bond has been forged, encouraging Cohen to do more than he was comfortable with before receiving Dash. Cohen proudly trains new tasks and manages feeding and daily care for his fuzzy best buddy.

"Cohen devised his own system for feeding Dash," Malorie says. "He'll take Dash to the drawer where his food is and have him tug the door open, leaving Cohen to dispense his food. Cohen feels so special

that it's his responsibility to feed and take care of his dog. It's amazing to see how much pride he takes in his responsibilities."

While Dash is also a constant companion, he serves an important role in ensuring Cohen's independent future.

"Our dream is for Cohen to be prepared for adulthood, and having Dash now is a crucial step in that preparation," Malorie explains.

**"We hope Cohen will live a completely independent lifestyle with the support and love of a service dog like Dash by his side."**

With Dash, Cohen is not only finding joy, friendship and confidence, but also gaining the independence he needs to thrive – now and into the future.



### Ways to Give - Holiday Checklist

- Volunteer my time
- Sponsor a Puppy
- Make a one-time gift in honor of a loved one
- Become a Monthly Donor
- Give through my Donor-Advised Fund (DAF)
- Add Canine Companions to my estate plans



# BEYOND GRATITUDE – A Special Gift

Every hour of the day for our incarcerated handlers is dedicated to providing loving, expert care and training to our future service dogs to give back to their communities. This special job earns a small amount, like all jobs in the justice system.

Recently, a letter arrived from one of our handlers, Robert Smith, at California Health Care Facility Stockton, sharing gratitude for the opportunity to raise a puppy named Nashi.

**A donation was enclosed – \$100 of his hard-earned money was given to Canine Companions.**

Service Dog Nashi graduated with 22-year-old Hunter, working diligently to increase his independence by assisting with daily tasks.

“Having been given the privilege and honor of helping to raise the wonder dog Nashi on her path to becoming a service dog for her forever human Hunter, I wanted to express my feelings in a more tangible manner,” Robert says in his letter. “I am simply blown over at the opportunity you provided me and will cherish it for the rest of my life.”



*Hunter and Service Dog Nashi pose with Nashi's co-puppy raisers Spencer and Zareen on graduation day.*

You can amplify the impact of this special gift.

**Will you match this unexpected, generous donation with a \$100 gift to Canine Companions?**

Every dollar makes a difference – Nashi's puppy raiser is just one example of our dogs' impact on everyone they meet.

Scan the QR code to make a gift to match this incredible donation now!



Give a Gift with  
**Twice the Impact!**

Get your 50th anniversary edition 2025 Puppy Calendar today and you'll support our mission and have the most adorable gift of the year!

[canine.org/calendar](https://canine.org/calendar)





# Eukanuba and VCA Animal Hospitals Boost Canine Companions Care

Canine Companions and Eukanuba, a division of Mars Incorporated, are renewing a partnership that continues the legacy that we've been building for more than 30 years. Since 1991, we've trusted Eukanuba premium dog food formulas to support all stages of development of the dogs in our program.

Through our close relationship with Eukanuba, we're excited to unveil an extended national partnership with VCA Animal Hospitals, the global leader of comprehensive veterinary services and a proud part of Mars Veterinary Health. VCA Animal Hospitals will expertly serve as a pet care network for Canine Companions providing our community world-class medicine.

"We're delighted to continue our long-standing, 33-year partnership with Eukanuba," says Paige Mazzoni, CEO of Canine Companions. "Eukanuba has provided financial support for our mission year after year, and now, they're helping advance nutrition and optimal healthcare for our service dogs at all stages of their

lives. As we expand further into the Mars Petcare ecosystem with the inclusion of VCA Animal Hospitals, we look forward to continuing to grow our partnership in strategic ways in the future."

We're grateful to have Eukanuba as our official nutrition partner and VCA Animal Hospitals with their world-class medicine across the United States as a new healthcare partner.



**Eukanuba™**

## Support Canine Companions by Shopping at Chewy!

Thanks to our partnership with Eukanuba, you can support Canine Companions every time you shop at Chewy.com. Chewy will donate 10% of every order placed through our special affiliate link [canine.org/chewy](https://canine.org/chewy) to Canine Companions.\* Shop for Eukanuba products or for anything your furry friend needs at Chewy.com and you'll support our mission!

\*excludes auto-ship

## CareCredit Supports Service Dog Month

In September's National Service Dog Month, our partner CareCredit, a Synchrony solution, helped spread awareness by promoting educational webinars, sharing on social and sending emails. The webinars attracted hundreds of participants, including CareCredit employees. We appreciate CareCredit's support in expanding our reach, both during National Service Dog Month and throughout the year.



Synchrony solutions





## IN MEMORIAM: **John McKinney**

With great sadness, we announce the recent passing of John McKinney. John joined our national board in 2007 and brought his experience, wisdom and passion for our mission to many committees and projects throughout the ensuing years. He played a critical role in developing our partnership with Baylor Scott and White Health, establishing our South Central region and campus. He also served as board chair from 2019 to 2023.

During his tenure as chair, John was a guiding light. His strength and wisdom steered us through a pandemic, several natural disasters and years of change. John cared deeply about our mission, always focusing on how he could help Canine Companions be the best organization possible while still caring deeply for our employees, clients and community. We remember John as a mentor, his gentle advice and guidance readily given. His compassionate heart, willingness to listen and patient counseling will be missed.



## **SHARKS PUP GILL GRADUATES!**

The San Jose Sharks sponsored and followed puppy Gill on his journey to becoming a service dog, and he recently graduated! Service Dog Gill was matched with 14-year old Chase of Sacramento. Chase has autism and Gill's calm presence in public places will allow Chase and his mom Colleen to go on more adventures. Gill will use his "cover" cue to calmly lay his body on Chase to provide deep pressure. Gill and Chase are perfect teammates, just like the Sharks and Canine Companions. Thank you to the San Jose Sharks for their ongoing support of our mission!



# NATIONAL BOARD UPDATE

**We're pleased to welcome three new members to our national board of directors. Their professional and personal experience brings a wealth of knowledge to our already robust group of volunteers.**

## **CHRIS MATHENA**

Chris Mathena served 22 years in the U.S. Navy, eventually retiring as a senior chief hospital corpsman. Chris serves as a senior management analyst and auditor for the Department of State, Office of the Inspector General. While undergoing treatment at Walter Reed National Military Medical Center, he learned about the positive impact of Canine Companions service dogs. Chris was partnered with Service Dog Wadsworth in 2024. He brings a unique perspective to the board as a veteran and client.



## **TANISHA HALL**

Dr. Tanisha Hall began her career with the Bureau of Prisons as a Correctional Officer at FPC Bryan in 1994. She has worked continuously for 30 years in the correctional system in a variety of roles including reentry affairs coordinator at FDC Houston and executive assistant and camp administrator at FCC Pollock. She currently serves as warden at FCI Bastrop in Texas. Tanisha joined the Canine Companions national board in June 2024. She is a passionate and enthusiastic lover of all animals.

## **TERESA JOHNSON RAMEY**

Dr. Teresa Johnson Ramey learned about Canine Companions when she encountered a puppy being raised by a faculty member at Francis Marion University. Teresa felt inspired to volunteer as a diversity, equity, and inclusion consultant and trainer with Canine Companions.

Teresa is vice president for community, diversity and inclusion at Roanoke College in Salem, Virginia. She has over 30 years of experience in higher education, working at various colleges and universities, in student affairs and community outreach.



## **SPONSOR A CANINE COMPANIONS PUPPY!**

Support a puppy's journey to becoming a service dog, creating life-changing partnerships and fostering greater independence. You'll get a special sponsorship kit and updates throughout their journey. Make a difference today!





**JOIN US!**

**Celebrate 50 years of independence.**

Dallas, Texas – March 22 | Medford, New York – May 10  
New Albany, Ohio – June 12 | Santa Rosa, California – June 14  
Oceanside, California – June 21 | Orlando, Florida – October 25  
Seattle, Washington – November 1

Stay tuned for more information.

# UPCOMING EVENTS

## **Sit Stay Sparkle Seattle**

November 1 – Seattle, WA

## **Salute Independence**

November 6 – Bay Shore, NY

## **National Graduation Day**

November 8

## **National Graduation Day**

February 7

## **DogFest Southeast/Orlando**

March 8 – Winter Park, FL

## **Independence is Golden 50th Anniversary Gala**

March 22 – Dallas, TX



# YEARBOOK

## NORTH CENTRAL

**1. AUGUST** Britt & Cupertino; Lisa & Liam; Jay & Wilson; Meredith & Gibson; Felipe & Bert; Brian & Frosty; Rochelle & Sergeant; Nicholas & Maude; Derek & Herbie; Ryan & Didi; Allison & Valence; Alexis & Norm; Lindsey & Dino IV.



## NORTHWEST

**1. JUNE** Till, Holly, Serge & Pascal with Lucy; Magnus, Francis & Ashley with Abe; Kiersten with Fernandez; Sally with Weldin.

**Puget Sound Field Office** – Amanda, Drew & Evan with Kalvin; Michelle & Donal with Blaine; Sara with Huddle.

Patricia with Symon.

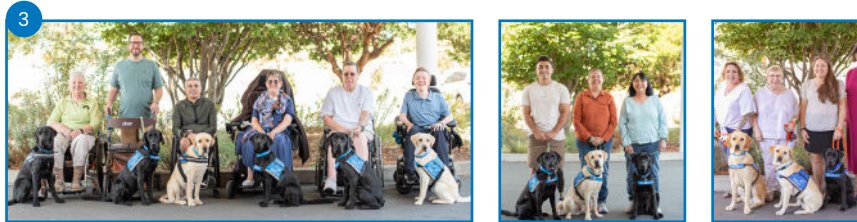
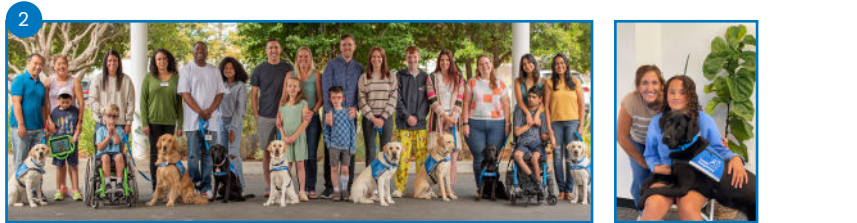
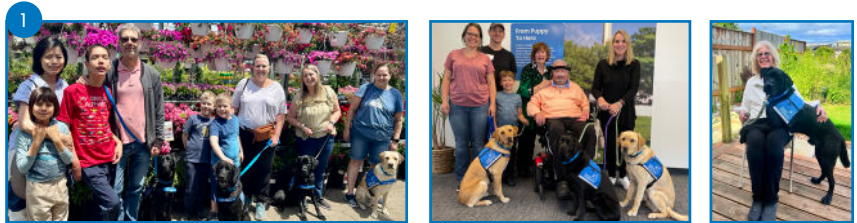
**2. JULY** Cayden, Linus & Jesamine with Garbo; Caleb & Kelli with Artie; Mya, Georginea & Dwight with Clara; Stella, Eric & Tammy with Nifty; Grayson, Phil & Elise with Thornton; Chase & Colleen with Gill; Nora with Courtney; Akshay, Sahana & Chinthia with Zelina.

**Puget Sound Field Office** – Gina & Olivia with Vivianna.

**3. AUGUST** Donna with Dalton; Jonathan with Fauna; Earl with Wags; Karen with Glee; Bill with Kelvin; Owen with Vienna. G.R. with Vino (not pictured).

Dez with Moby; Misty with Campbell; Denise with Colton.

Cheryl with Kairos; Katie with Tino; Megan with Willow; Cynthia with Hitch.



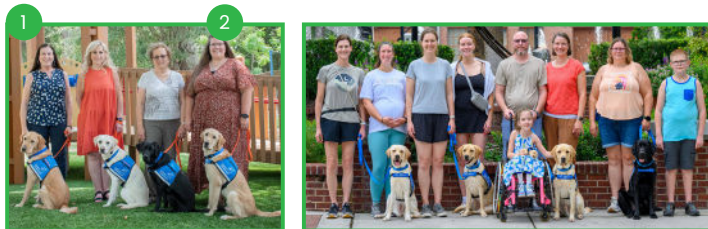
## SOUTHEAST

**1. MAY** Anne with Rover; Jeannie with Desi; Chris with Carolann.

**2. AUGUST** Leesa & Casey with Taryn; Kaylor & Meredith with Velour; Sophie, Julien & Amy with Webster; Landen & Lynnette with Lido.

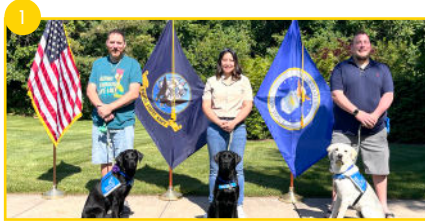
Betsie with McEldowney; Greg with Nelson; Mary with Haley; Danielle with Jay; Kimberly with Blue; Eden with Chippy.

Joann with Rizzo; Karen with Bennett; Dianne with Deena.



## NORTHEAST

**1. JUNE** Jason with Mira; Amy with Dudley; Jimmy with Maximo.



**2. AUGUST** Sharon with Taffy; Beth, Susan & James with Kamden; Dee with Kimmi; Madelyn, Laura & Kathryn with Nantucket; Kathryn with Falcon; Morgan with Wolf; Justin with Jazmine; Molly with Slate; Emily with Diego; Ashley with Sox; Caffrey & William with Ticket; Bear & Erin with Vanni; Eddie & Jeffrey with Verl.



Michael with Zorro; Beco with Charles.



## SOUTH CENTRAL

**1. JULY** David with Tom; Robert with Jensen; Cory with Sunshine; Kurt with Ricky; Miguel with Jansen; April with Rhapsody.



**2. AUGUST** Renee & Susan with Pierce; Carson, Justin & Jenna with Nessie; Usher with Night, Tara with Annie (front), Gavin with Prescott; Aubri with Cozy; LCDR Timmons & LT Carpenter with AJ; Ashley with Kenson; Hannah with Beth; Yujia with Gordie; Matthew with Ka; Preston & Carolyn with Patch.



## SOUTHWEST

**1. JUNE** Ashlee with Stearman; Jim with Payton; Bryan with Tami.



**2. AUGUST** Kory with Merin; Natalie with Alana; Anjali with Cabo; Christina with Volley; Luke, Dan & Holly with Scrivener; Calvin & Kristine with Superman; Mary & Christine with Farnham; Tessa & Jan with Veazie; Justin with Guinan; Woody with Rex.



Help us match more life-changing service dogs, free of charge.







PO Box 446  
 Santa Rosa, CA 95402-0446  
 Address Service Requested

Nonprofit Org.  
 U.S. Postage  
**PAID**  
 By Canine  
 Companions  
 for Independence



*San Jose Sharks pup Gill finds his match!  
 Read more on page 11.*



**Board Members**

**OFFICERS**

**Bill White**  
 BOARD CHAIR  
**John Miller**  
 VICE CHAIR/PAST CHAIR

**John Sabo**  
 TREASURER  
**Robin Sanchez**  
 SECRETARY

**MEMBERS**

**Collette Bunton**  
**Cathy Fischer**  
**Anne Gittinger**  
 CHAIR EMERITUS  
**Barrie Graham**  
**Russ Gurevitch, DVM**  
**Tanisha Hall**  
**Leslie Hennessy, PhD**  
**John Hopen**  
**Carolyn Hrach**  
**Judge Ed Kinkeade**

**Chris Kittredge**  
**Robert Lavie**  
**Michelle Ludwig, MD**  
**Christopher Mathena**  
**Teresa Ramey, Ed.D**  
**Juergen Rottler**  
**Jean Schulz**  
 CHAIR EMERITUS  
**Emily Williams**  
**Paige Mazzoni**  
 CHIEF EXECUTIVE OFFICER

**Honorary & Associate Board**

**Judy Allen**  
**Jack Hanna**  
**Dean & Gerda Koontz**  
**Madeleine Paulson**  
**Jon Provost**  
**Ken Ibarra, LPCC PAST**  
 INTERNATIONAL DIRECTOR

**Training Locations**

**Headquarters & Northwest Region**  
 Santa Rosa, CA  
**Southwest Region**  
 Oceanside, CA  
**Southeast Region**  
 Orlando, FL

**Northeast Region**  
 Medford, NY  
**North Central Region**  
 New Albany, OH  
**South Central Region**  
 Irving, TX  
**Puget Sound Field Office**  
 Seattle, WA

[info@canine.org](mailto:info@canine.org) | [canine.org](http://canine.org) | 1-800-572-BARK (2275)

