

Apply for an Service Dog



The application process is multi-tiered and at the completion of each juncture, the applicant will be notified as to whether or not they are invited to progress to the next step.

1

Exchange Information

Fill out the online form to exchange information at canine.org/apply.



The application process takes approximately 2-6 months, depending on time to get all materials from the applicant, doctors, references, etc. and availability to schedule interviews. Once accepted, wait time for an invitation to Team Training generally will not exceed 20 months, and can be as short as 2 months.

2

Complete Application

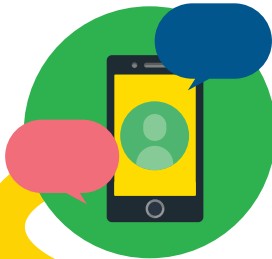
Complete the full application for a Canine Companions service dog.



3

Telephone Interview

Talk with a Canine Companions staff member about needs and interest.



4

Medical or Professional Reference Forms

To be completed by your physician or therapist.



5

Personal Interview

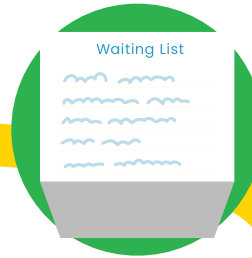
Meet in person with a Canine Companions staff member to discuss interest and evaluate dog temperament needs.



6

Selection Review

If accepted, qualified applicants receive acceptance paperwork and are placed on the waitlist.



7

Invitation to Team Training

Join us at a 2-week Team Training class to be matched and train with your service dog.



Connect with Canine Companions

canine.org/apply

1-800-572-BARK (2275) • info@canine.org